

# Deck the Hall

words: traditional English

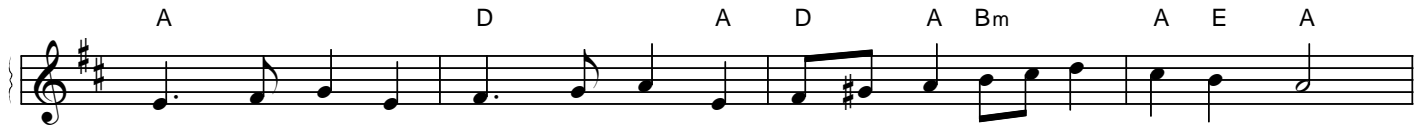
tune: *Nos Galan*, traditional Welsh



Deck the hall with boughs of hol - ly,  
See the blaz - ing Yule be - fore us, fa la la la la la la la la.  
Fast a - way the old year pas - ses,



'Tis the sea - son to be jol - ly,  
Strike the harp and join the chor - us, fa la la la la la la la la.  
Hail the new, ye lads and las - ses,



Don we now our gay ap - par - el,  
Fol - low me in mer - ry meas - ure, fa la la la la la la la la.  
Sing we joy - ous all to - geth - er,



Troll the an - cient Yule - tide car - ol,  
While I tell of Yule - tide treas - ure, fa la la la la la la la la.  
Heed - less of the wind and weath - er,